



## THE VALUE OF CRUISE TOURISM

The 2018/2019 Australian Cruise Industry Economic Impact Assessment reveals an industry that continues to generate significant national and regional economic activity – and benefits business and communities across Australia



### NATIONAL OVERVIEW

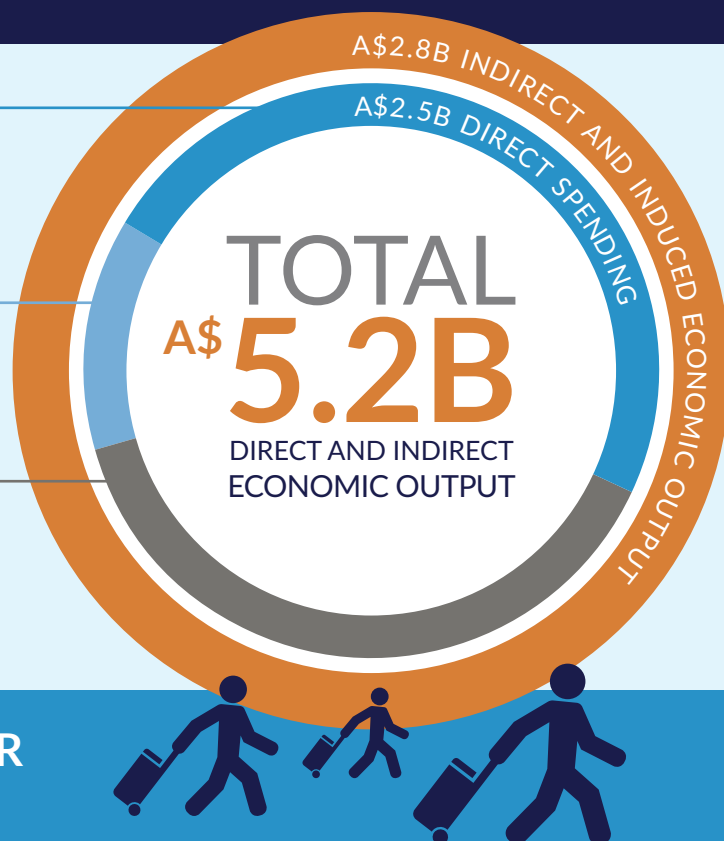


2018/19  
CRUISE  
INDUSTRY  
SPENDING

CRUISE LINES  
A\$1.1B

CREW  
A\$35M

PASSENGERS  
A\$1.4B



**3.5M** TOTAL PASSENGER  
VISIT DAYS

TOTAL JOBS (DIRECT & INDIRECT)

**18,135**



TOTAL WAGES AND SALARIES  
(DIRECT & INDIRECT)

**A\$1.6B**



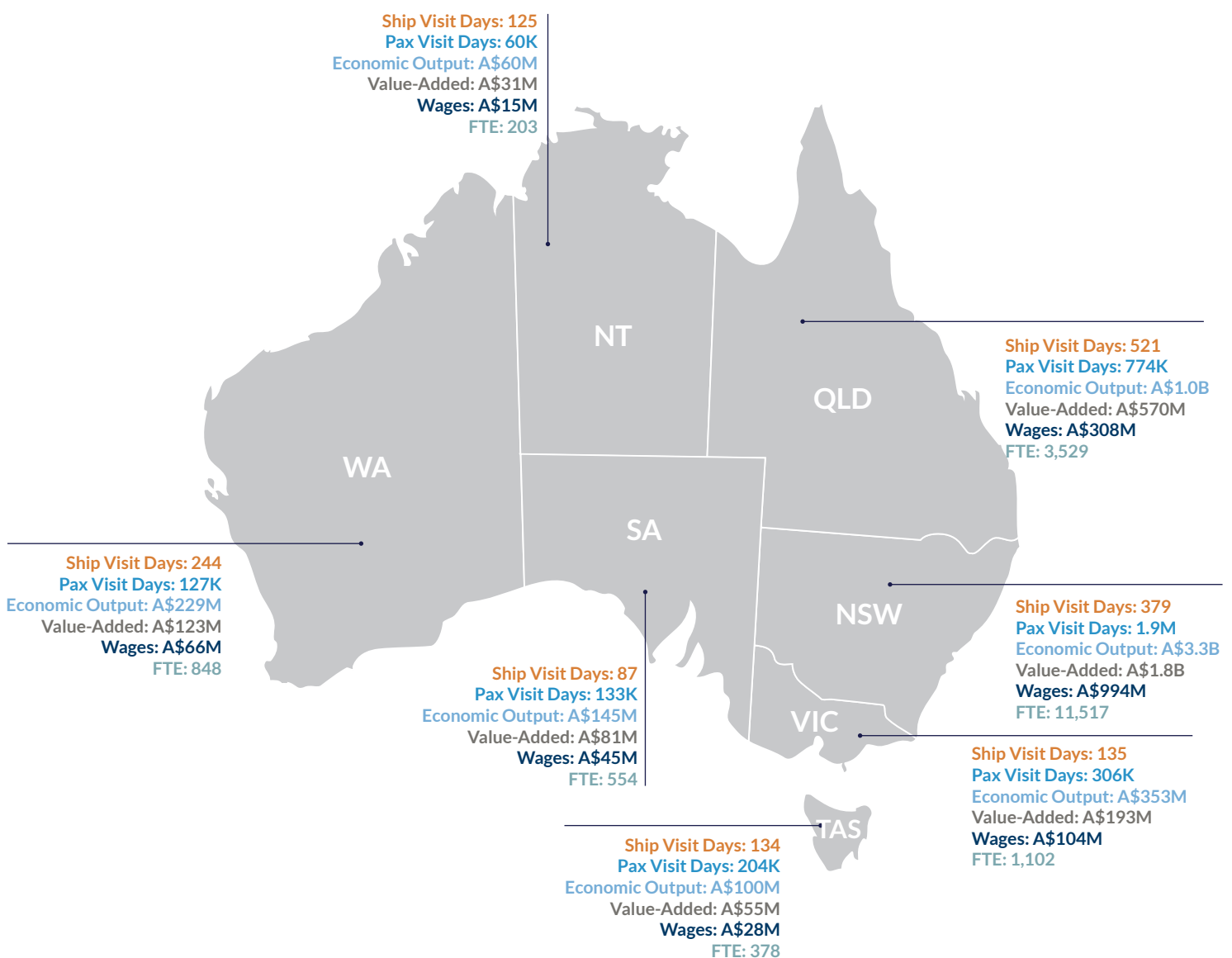
VALUE ADDED  
(DIRECT & INDIRECT)

**A\$2.9B**

Source: Economic Impact Assessment of Cruise Tourism in Australia 2018-19, prepared by AEC Group Pty Ltd



## TOTAL CONTRIBUTION OF CRUISE TOURISM IN AUSTRALIA BY REGION



NOTE: Figures subject to rounding.